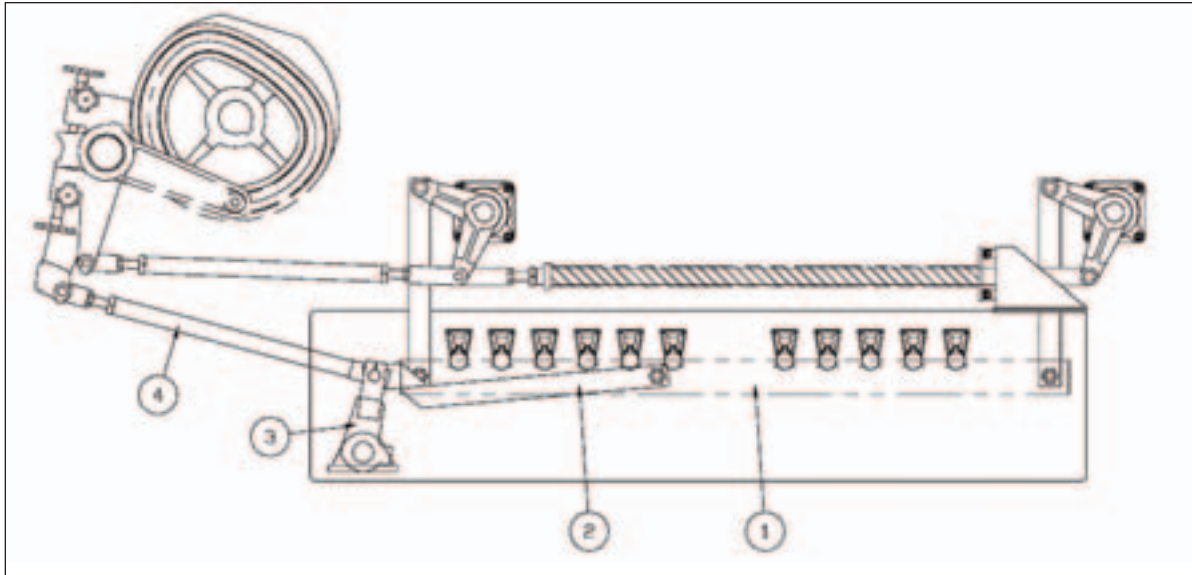


Modernization Kit No. 4750141 Draw Bar Conversion



Barry-Wehmiller now offers a draw bar arrangement for the Rinser and Hot-Hydro walking beam assemblies. Drive forces are transferred to connecting points on each side of the rack to achieve smooth movement with minimal vibration. Hyfax wear pads on the rack effectively control side thrust and maintain rack alignment.

Installation of this feature will reduce wear and maintenance on the racks and roller pins, increasing the service life of the walking beam itself. This feature is standard on all new Barry-Wehmiller Bottle Cleaners and can be retrofitted to all Model 14 and System 40 bottle cleaners.

The new bar conversion comes complete with the following components:

1. New side beams for spray rack (right and left) with a rigidly mounted pin for draw bar connection.
2. Two new draw bar links with spherical bearings and hardened steel bushings at drive end.
3. Two transfer arms including larger diameter hardened pins and wear pads.
4. New drive link with hardened steel bushings and split clamps.

Please contact your Barry-Wehmiller Customer Service Department for details.