



Features:

- **OPTION # 1: PU Control System Upgrade:**
- **PU Control:** Control of the Pasteurization Units typically within + 50%, -20% of the PU's target (e.g. 10 PU target: +5, -2 PU)
- Improved performance when combined with Single Heat Exchanger upgrade
- Human Machine Interface (HMI) or Panelview
- **OPTION # 2: PU Limiting:**
- Cooling by zone to limit maximum PU's during a long stop

Barry-Wehmler

Pasteurizer

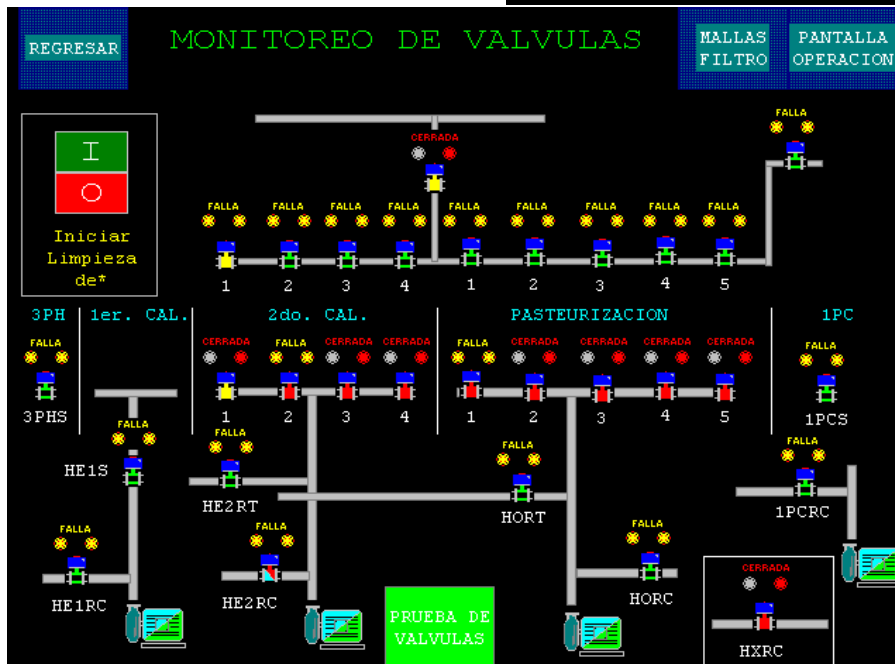
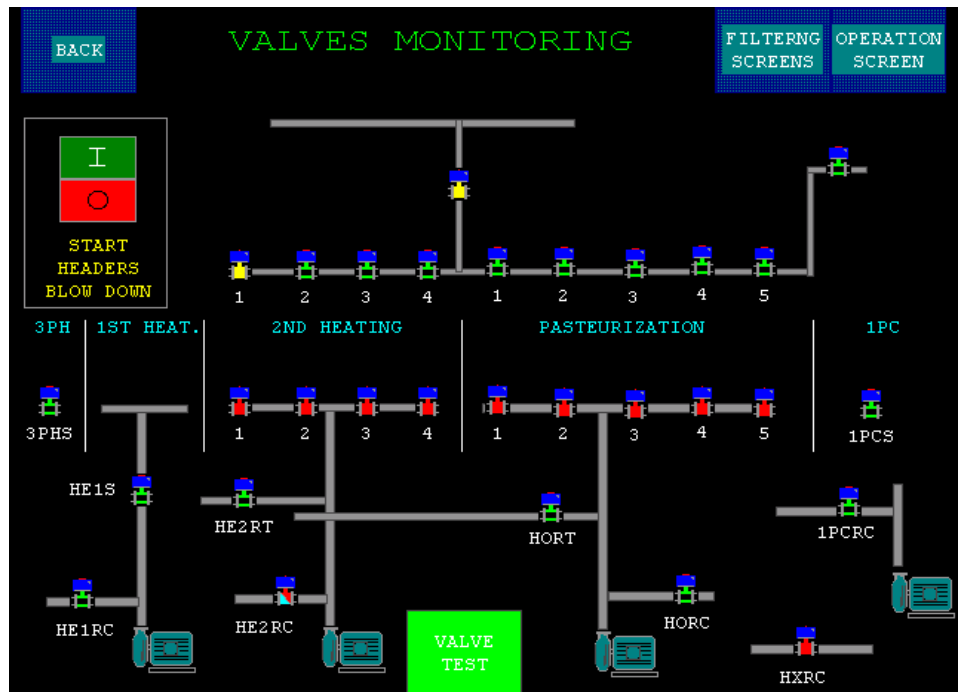
PU Control System Upgrade

The PU Control System upgrades are effective in upgrading your existing Pasteurizer.

Please contact your Barry-Wehmler Customer Service Department for details.

You can upgrade your pasteurizer with the following systems:

- PU Limiting - PU Control by zones (Heating and Holding)
- PU Control - BW PU Control



Barry-Wehmler

Barry-Wehmler Company

8020 Forsyth Blvd.
St. Louis, MO 63105 USA
Phone: (314) 862-8000; Fax: (314) 862-2457
Web Site: www.Barry-Wehmler-Company.com